

The CATCH Program: Building a Culture of Health



CATCH in Texas



Top Evidence Base

120+ Peer-Reviewed Scientific Studies



TEA Approved

Coordinated School Health Program



Aligned to 100% of TEKS

Latest K-8 Health & PE Standards



Widely Adopted

Over 50% of Texas K-8 Schools

Setting CATCH Apart



Rigorously Researched and University-Backed

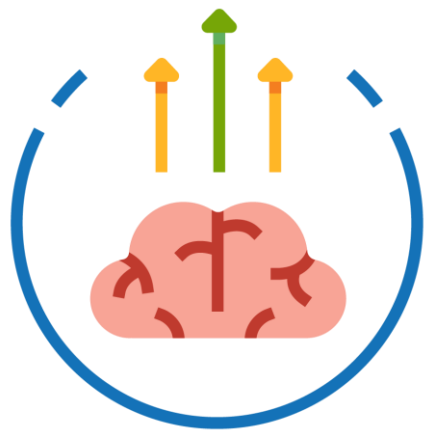
- 120+ peer-reviewed studies showing changes in health behaviors and outcomes
 - Beyond “evidence-informed”
- 30+ years of research showing success in communities of all shapes and sizes
- Ongoing R&D relationship with UTHealth & MD Anderson Cancer Center



Non-profit, MWBE Structure

- Considerably less expensive per campus than for-profit programs
- Offers need-based discounts and grants
- Qualifies as an MWBE for supplier diversity initiatives

CATCH's Proven Formula for Effective Health Education



Knowledge Building

+



Skill Building

+



Environmental Support

=



Healthy Decision-Making

CATCH's TEKS-Aligned Programs



Nutrition & Health Ed
Grades PreK-8



Substance Misuse
Grades K-8*

FREE

**9-12 vaping only*



Quality P.E.
Grades PreK-8



Oral Health
Grades K-2

FREE



Mental Health & SEL
Grades K-12



Sun Safety
Grades PreK-5

FREE

Truly Coordinated Whole Child Health & Wellness

Program Principles



- Consistent approach & language across modules
- Interactive and hands-on
- Multi-sensorial (Powerpoints, videos, stories, visual aids)
- Focus on student empowerment and intrinsic decision-making
- Peer-leadership and small group discussion
- Integration of SEL, physical activity, and health
- Inclusive - Guide for kids of all abilities
- Family components & resources
- Campus Whole Child Coordination Kit

100% Digital Access: CATCH.org

About the Platform

- Access via any Internet-capable device
 - Teachers access platform, not students
 - Single Sign-On (SSO) available
 - Secure (HTTPS) and FERPA/HIPAA compliant
- Easy to navigate content
- Teacher and Campus usage reporting
- Virtual orientation training and user support from CATCH Team

The image displays two screenshots of the CATCH.org website. The top screenshot shows the 'Elementary School' section with a grid of curriculum cards for Kindergarten through Grade 5, as well as video lessons for Grades K-2 and 3-5. Each card includes a 'SEE OVERVIEW' link and a 'Let's GO!' button. The bottom screenshot shows a video lesson player for 'Episode 1: GO, SLOW, and WHOA Foods'. The video features Coach Lindsay, a CATCH Champion, and includes a list of episode handouts on the left side of the player interface.



TEKS Alignments

✓ = 100% coverage in '22-23

Health Strands	Elem	Middle
Physical Health & Hygiene	✓	✓
Healthy Eating and Physical Activity	✓	✓
Mental Health & Wellness	✓	✓
Alcohol, Tobacco, & Other Drugs	✓	✓
Injury & Violence Prevention and Safety	✓	✓
P.E. Strands		
Movement Patterns & Movement Skills	✓	✓
Performance Strategies	✓	✓
Health, Physical Activity, & Fitness	✓	✓
Social & Emotional Health	✓	✓
Lifetime Wellness	✓	✓

Not included: Reproductive Health



CATCH TEKS Packages

Both Packages Include:

- Full Health & PE Program Suite
 - Classroom, PE, SEL Journeys, CATCH My Breath, CATCH Healthy Smiles, Sunbeatables
- Coordination Kit
- Student & Parent Materials
- Single Sign On (SSO)
- Campus/User Reporting
- CATCH Technical Support

\$1,999

TEKS + Training Package

- ✓ Full Program Suite
- ✓ Video Lessons
- ✓ Printable Student Worksheets
- ✓ PowerPoint Slides w/Teacher Notes
- ✓ Virtual Orientation Sessions
- ✓ Asynchronous Training Library

Price per School per Year,
unlimited usage

\$1,499

TEKS Package

- ✓ Full Program Suite
- ✓ Video Lessons
- ✓ Printable Student Worksheets
- ✓ PowerPoint Slides w/Teacher Notes
- ✓ Virtual Orientation Sessions

Price per School per Year,
unlimited usage

Custom packages and pricing available upon request



Thank you!

Any Questions?



90-Day Free Trial!
catch.org/free-trial

Bryan D Austin
Community Consultant

bryanaustin@catch.org
(828) 221-7171

CATCH[®]
GLOBAL FOUNDATION



@CATCHhealth



@CATCH_health
CATCH.org